

**DOZZ JASONS:** Having the time of his life

MARCH 2025

# Skeleton

Realm

## GAMETESTERS ARE HERE

They're the biggest game testers on the planet, amassing over 10,000 games tested to date, and they're coming for Doldin's Pillar and PumpQuest. Will you join?



\$7.99 US \$11.99 CAN



[Skelepedia.org](http://Skelepedia.org)





**Take Shape.**

[www.MeerSocial.me](http://www.MeerSocial.me)



# PumpQuest

## Pre-Beta

PumpQuest, a new single player RPG from BingBong Games is in Pre-Beta and Paters are lined up to pump it hard.

- Seek the wisdom of "Pump Guides" as you train your body mind and spirit to defeat enemies and gather crap
- Enjoy dozens of hardcore weps to use in battle.
- Enjoy dozens of hardcore items and armors as well.
- Enjoy NPCs Quests, boss fights and playpumping in a classic RPG style.



COMING SOON FOR PATERS ONLY!  
[patreon.com/skeletonrealm](https://patreon.com/skeletonrealm)



*There's only one you.*  
But there's three shapes.





The following content was submitted by Skeleton Realm Contributors known as "Realms" and the businesses/organizations they represent. The opinions expressed within said content are solely the author's and do not reflect the opinions and beliefs of Skeleton Realm LLC or MeMoreTV.



### Note:

This manual provides the procedure for correct utilization of the Lepis® M0Alpha+™ for microstructural matrix analysis. The instructions are to be followed to the letter to ensure that results are complete, precise, accurate, and replicable.

### Prior to initialization, check that:

- Computer is plugged in and turned on.
- Probe is powered and accurately transmitting data. [This should be verified at the beginning of each shift according to the Calibration of Lepis® M0Alpha+™ (Daily) manual, PID PDSm-4932(f).]
- Probe software is properly synced with spreadsheet program PDS.

### Analysis Preparation

- Create a blank sheet in PDS using the MSMa.pds template, and save in the correct location.
- Select Count. In the options popup window, navigate to the Calibration text field and input the calibration ID generated by the most recent calibration. [This indicates to PDS where to look for parameters. Alternatively, you can choose Browse... in the options and navigate in the file system to the storage location of the calibration data and make your selection from there. Note: This is not the preferred method, but may be employed if necessary.]
- Ensure that parameters are approximately the same as those in Fig. 2. The only other modifiable parameter in the Count>Options menu is Morse Demarcation. Its value is SILK by default. If value has been altered, change to SILK.
- Press Save.

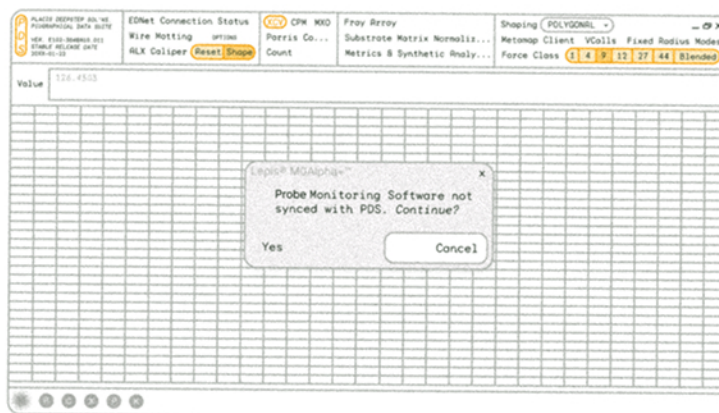


Figure 1. A popup window will indicate if the probe software is not properly synced with PDS.

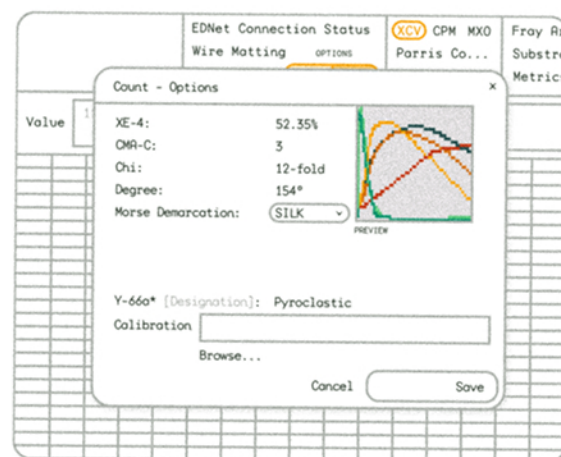


Figure 2. Options popup window for Count.

### Acceptable Parameter Ranges

XE-4	47-60%
CMA-C	3*
Chi	12-fold*
Degree	variable

\*Any variation in these parameters is unacceptable. Contact lab manager immediately.

### Troubleshooting

If XE-4 is lower than 47%: the on-site probe solution gas concentration is insufficient. The probe solution may be low or expired. Instruct the probe team to investigate and add or replace solution as needed.

If XE-4 is higher than 60%: the solution is likely expired. Contact probe team to investigate.

If CMA-C or Chi differ from their values in Fig. 2: either the probe software was improperly synced with PDS, or there is a critical malfunction in the probe itself. Contact lab manager and refer to the PDS Troubleshooting manual, PID PDSm-4997(a-g) for further guidance.

Degree will change based on probe positioning and is not a reliable metric for verification.

Continued on Page 2





# ***X-Wave***

## MOTORIZED DOLPHIN

**Hydrodynamic Design**  
Mimics real dolphin movements!

**High-Powered Motor**  
Speeds up to 250 mph

**Submersible Thrill**  
Dive up to 4,000ish feet underwater

**Eco-Friendly Tech?**  
Jorm engine with zero emissions

Introducing the ***X-Wave Motorized Dolphin*** — the ultimate watercraft for adrenaline junkies and marine lovers alike! Engineered for speed, agility, and breathtaking aquatic stunts, this revolutionary ride lets you slice through waves, dive beneath the surface, and *launch* into the air—just like a real dolphin.



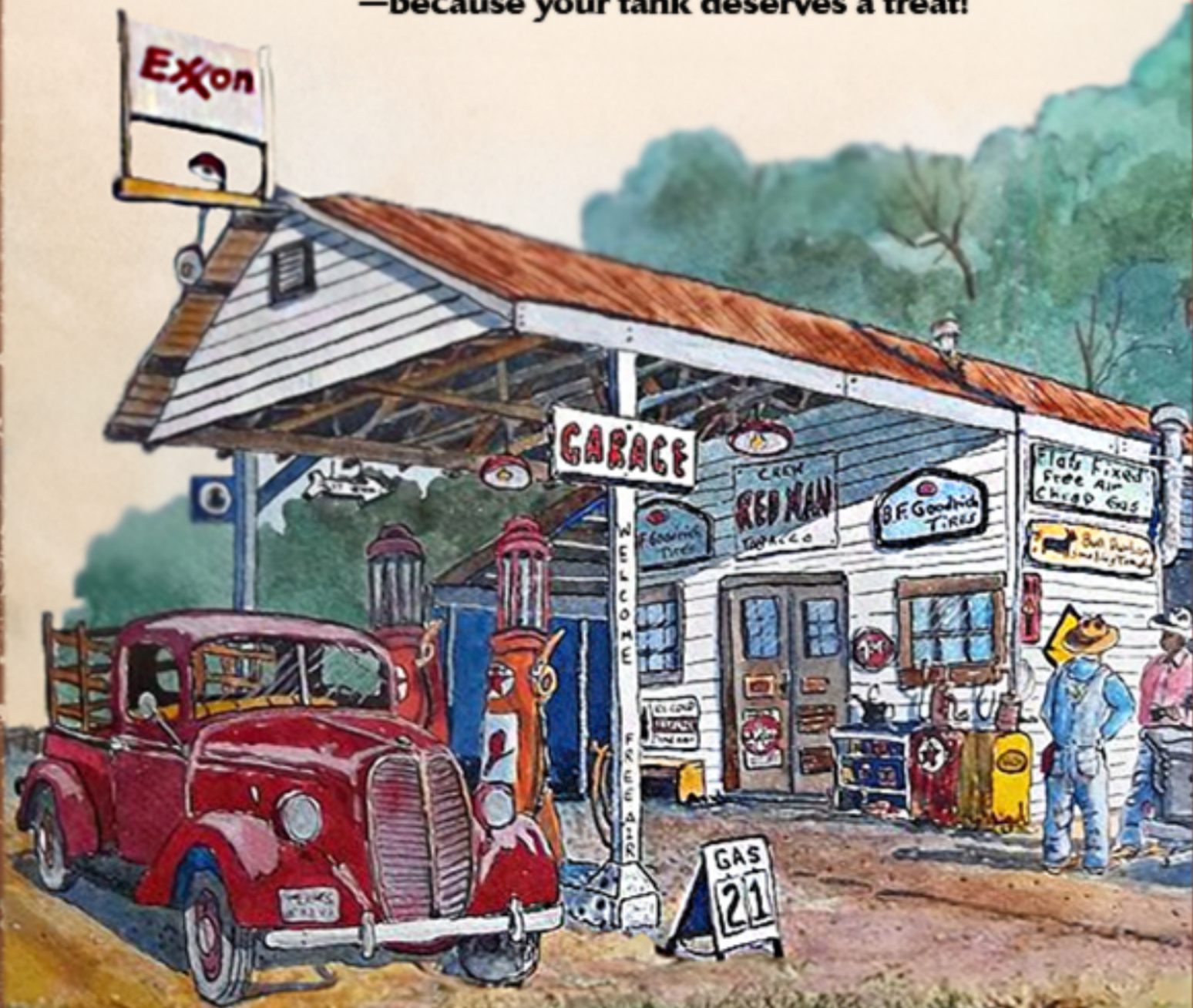


# WE'RE EXXON

## FREE GAS ALERT

ExxonMobil is giving back to our loyal customers!  
Swing by your nearest pump and guzzle a **FREE SAMPLE** of gas

—because your tank deserves a treat!



We're more than 100,000 people working on energy.





The inevitable rise of

# DICE DROPPERS

## The Unpredictable Flavor

In the world of gourmet cuisine, there is a new wave of chefs who are eschewing traditional ingredients in favor of a more modern, playful approach.

These chefs, known as **Dice Droppers** have become known for their innovative use of dice as a flavor enhancer and visual spectacle. Dice is toy.

*"Fumble  
Broth is for  
quitters.  
Real chefs  
drop dice."*

Spicy Steve

Dice Droppers®







shape play with me

on

meer social .me



He's Coming.  
Are You?







# Sentient Mountain Theory

the purpose of this page is to inform.

Bone toys. you know them... big bone rock toys from days of yore... but when has anyone ever seen a beast of your?? well... nobody has seen beasts of your because they are make believe from the mountaines. at least according to the **sentient** mountain theory..... and you will know it

**Theory:**  
dirty bones  
from beast  
of your are  
a trick from  
mountain  
foot haire  
because  
they are  
smarter



**Now** when a beast of modern day slips and kicks a bucket it disappears hardcore and is swallowe't in pieces by massicve birds. and thats been there forever. so how did scary beast of yore stay long enough to become bone toy when best get slowellwed by big bird beasts and turned to dirty **shit**??? this has turned old bone theory into a suspicious one and has made many question old bone theory.

**So** let me tell you this. When they find the dirty bones it is with the mountanes. what if the moutnaitns are playing a big trick on modern beasts by making big bone toy with their feet buried deep into **plates tektonik**??? they have hairies on their feets to and you just assumed they didnt. shame on you!!! and what are these haire? thats right. big dirty bone toys for nerds to play with. and that solves it do you understand



## Vocabulary

**sentient:** conscious and capable of thought

**shit:** feces

**plates tektonik:** plates of hardcore rock on our planet earth





# I Read (And Enjoy) The Zine Even Before It Comes Out

And then on the first Wednesday of every month I forget everything and can enjoy each submission as if reading it for the first time.

By Dan Levine

