

# SKELETON REALM

FEBRUARY '24

## DRIVER'S ISSUE



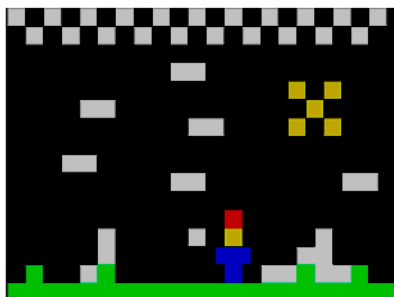
**Tips for Effective Honking**      **Inside Don't Stop Potholes and Toyunga's When other obstacles are "Good?"**  
**Factory**

**EXCLUSIVE TEST:** SORMMSON'S HORNS VS. SONGHORN DIGITAL HORN SYSTEM  
WE BATTLE TESTED ALL HORNS FOR YOU. LOOK INSIDE!

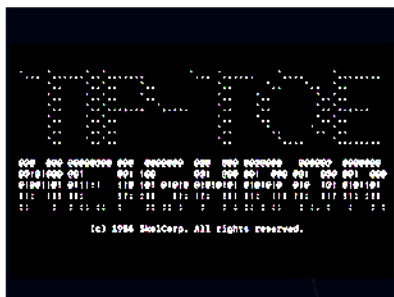


[skeletonrealm.org](http://skeletonrealm.org)

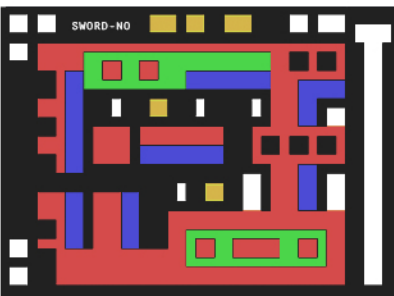




*Snow Avider*



*Tip-Toe Neighbor*



*Doldin's Journey*



*Stove Keep*



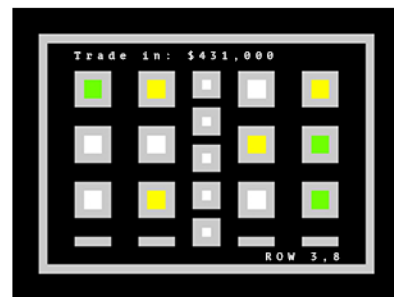
*Purgatorio*



*The Epic of Old;  
Not Then But NOW*



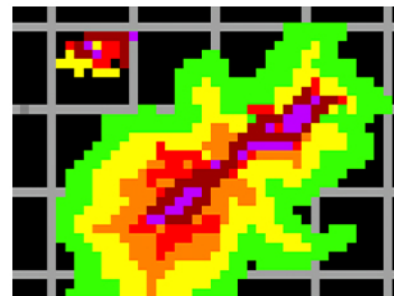
**ONLY AT  
KOHL'S**



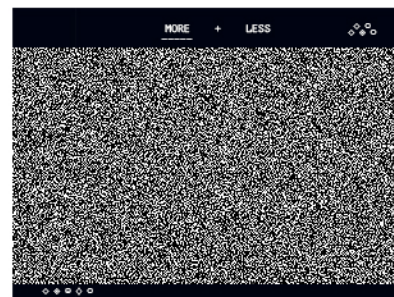
*Orb Investor*



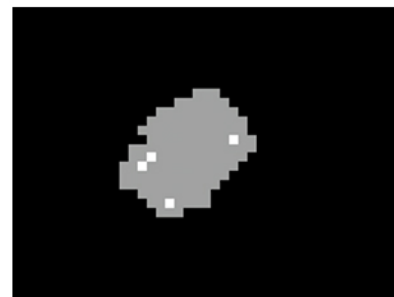
*Write 5*



*WeatherAware*



*Noise Party*



*Gorb*



# Hush.

Cállate  
Faire Taire  
Stille  
صه  
ТИШЕ  
嘘

*Hush Procedure*

- 1. Hush*
- 2. Visualize Silence*
- 3. Embody Non Speaking Attributes*
- 4. Hush*





This month I was incredibly excited to review the all new Toyunga Biome. I was ready to check out everything about it and enjoy it a lot. I was most excited about the horn.

I got into the car and started pumping the horn right when I got in. The car was a 2026 Toyunga Biome. The horn sounded amazing. I started driving the car and continued to pump the horn.

Other drivers around me could hear my horn super clearly and they noticed my honks. It was easy to tell that they could see and hear me super well and it was because the horn was easy to pump and was super loud. I crashed the car - just kidding.

I drove it fast on the highway to 100mph (just kidding). I drove at the speed limit of the car and obeyed traffic control device warning systems. My speed was monitored by aircraft. The United States Government monitored my speed with F-16 Fighter Jets and I obeyed the speeds shown on the speed limit signs.

After driving for 16 hours, I counted my horn

pumps. I had achieved 132,480 pumps, which is 2.3 horn blasts per second. I was amazed at the Biome's ability to blast pumped horn "shouts" at such a rate of speed.

I just called the horn blast a "shout." That's because I consider a horn blast to be a vehicle's "shout." It's similar to our shouts but it is the vehicle. I understand a vehicle is a machine which does not have a personality and is not conscious, however I use the term "shout" to describe a horn blast from the vehicle as an analogy to our human shouting, which by the way is not contingent on us having consciousness also though. Our conscious observations may produce in us the physical act of "shouting," but the shouting itself is merely a physical action of the body and therefore a non-conscious machine or animal who does not possess rationality may also shout.

This goes without saying and is relatively self-evident given a rational interpretation of the world around us, but must be stated clearly.



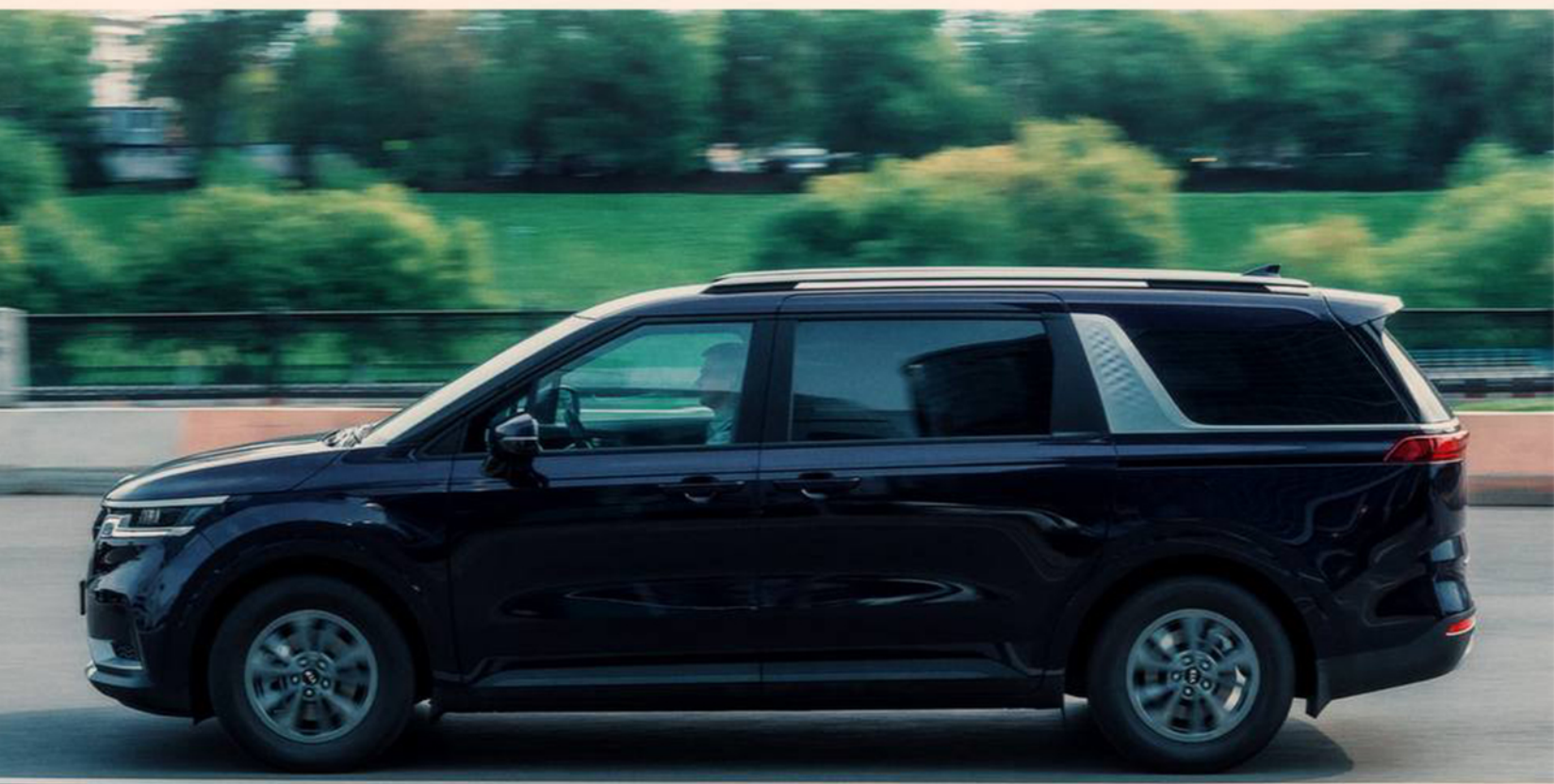
When I was done driving, I actually fell asleep and slept for about 8 hours. It was not night time though, it was daytime. I slept from 10am to 6pm. During this time, I was parked in a SORM's parking lot and the horn was "going" the whole time. This was good because it kept birds off the vehicle and stopped them from squirting on the car. Jason told me if I got the car super dirty, I'd owe a cleaning fee, so in this way, the horn was awesome to stop me from spending my personal money on cleaning the biome because birds stayed away. Do you understand?

When I was done sleeping, I woke up and then pumped the horn for a few minutes. I put the gas pedal all the way down when I backed out of my parking space and then pressed the break pedal all the way down to stop. Then I put the biome in drive and pressed the gas pedal all the way down to continue on my journey back home. I had driven 16 hours in one direction, so needed to drive 16 hours back to where I started from. I honed the exact same

number of times on the trip back which was also exactly 16 hours. This proved the extremely reliable rate at which the Biome is able to pump honks.

When I got back to the MeMoreTV office to return the vehicle, I was met by Jason who was excited to get the Biome back. He secretly was pumping the horn himself, which I learned later. Before I returned the vehicle, Jason asked me to exit the area and then come back in 10 minutes. When I came back, he told me to get back in the car and drive it once more. I was confused but did as he said. When I got in the seat and went to drive. I pressed the gas pedal but the car didn't move. Then I pressed the break pedal and the car moved. I realized Jason's prank on me that was his "final" test for me with the biome. He switched the gas pedal with the break pedal and so they were reversed.

Jason laughed and then I was done so I gave him the keys and that was the end of my time with the biome. Conclusion: it pumps good honks.



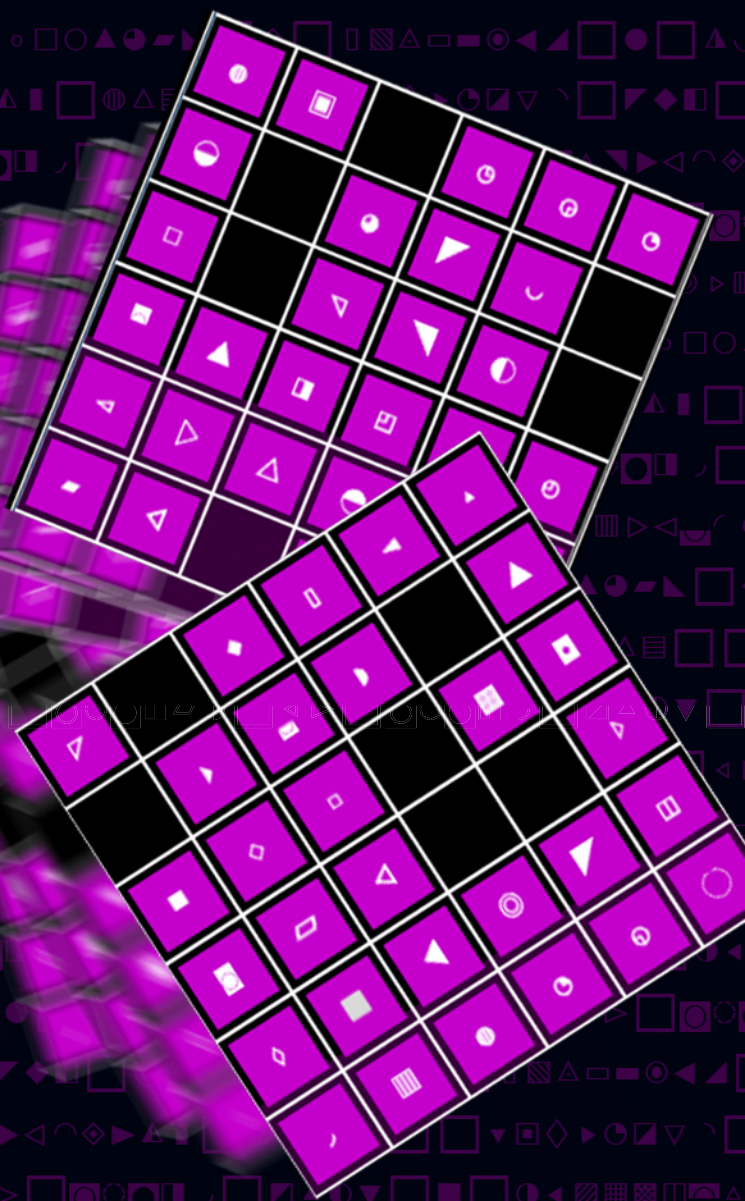


# meq T.E.S.T.

LET US TEST  
YOURSELF.

[www.MEqTEST.me](http://www.MEqTEST.me)

NAME: **ME**  
MEqSCORE: **201**



## JOIN THE MEMORETV ENGINEERING TEAM.

MEMORETV IS HIRING YOUNG,  
EXPERIENCED MASTERS OF  
TECHNOLOGY TO SPEARHEAD THE  
NEXT GENERATION OF INTERACTIVE  
STREAMING, GAMING, AND WATCHING  
YOURSELF STREAM. APPLICANTS  
MUST HAVE AT LEAST A 180 MEQ  
SCORE AND MINIMUM 12 YEARS  
EXPERIENCE WORKING AT  
MEMORETV.

**MeMoreTV**  
Triple Play Game



The following content was submitted by Skeleton Realm Contributors known as "Realms" and the businesses/organizations they represent. The opinions expressed within said content are solely the author's and do not reflect the opinions and beliefs of Skeleton Realm LLC or MeMoreTV.



*I'm so smitten, I  
think I've got a case  
of Cupid's pump  
fever!*

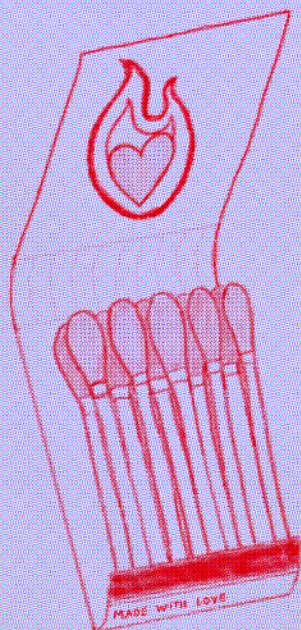


to:  
from:

to:  
from:



*You're sweet a'swell,  
Valentine!*



to:  
from:

*Be my Valentine,  
and I'll be yours  
to match!*

**HUSH!!!**



*My love is calling...*

to:

from:



# Explaining Joe Rogan's body parts in a way you dip shits would understand

By Dan Levine



Brain is robot owl. Extreme wisdom and AI capabilities.



Eyes are regular owl. Hardcore sight.



Chest is fort Knox, guarding Joe's most valuable possession: Meaty heart.

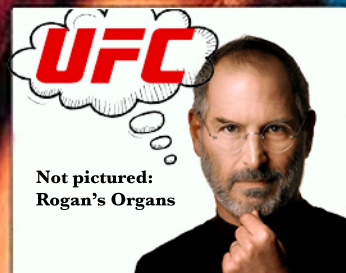


Abs are hand of Thanos from the Marvel movies. Incredible strength.



Penis is Ouroboros (not dirty) because of eternal cyclic renewal

Leg is like Star Wars stick. Extreme rigidity and usefulness.





# SINKHOLES & SKELETONS

CLASSIC EDITION

KRANG the Decapitator!!!

CHARACTER NAME

GORBARIAN Lvl 5

CLASS & LEVEL

GRONKSTER

PLAYER NAME

ME-FLING CHAOTIC PUMPER 62000

RACE

ALIGNMENT

XP

STEEZ

8

PUMP METER



PUMPING

12

ABILITIES

- Basic Attack
- Pump (+1)
- Bust (-2)
- Hide
- Run Away

BUSTING

4

SWAGGER

7

ORB AFFINITY

18!!!

ANCIENT KNOWLEDGE

4

SKILLS

- 0 Hacking
- 4 Hushing
- 4 screaming
- 2 digging
- 9 Orb Lore\*
- 2 photoshop
- 1 Rizzing
- 2 Crawling
- 0 crouching

ARMOR

MAX HP



56

NO LIMIT!!!

3:1 Bad!!

PUMP/BUST RATIO



12 ± 2

GORBULENCE RATING

SAMARIAN  
WAGSTAFF +3  
(1d11 +3)

DOUGIST'S  
LEATHER  
BODDESS

WEAPONS / ARMOR



APPEARANCE

Hungry, Sleepy

PERSONALITY TRAITS

Sometimes dirty

FLAWS

Fallen  
SAMARIAN (Exiled)

FACTION

JORMITES, haters,  
ENEMIES, hole trolls

EQUIPMENT / INVENTORY

- SALTY'S TEAPOT +6
- CHROMEKIN CLOAK
- 2.25" Wooden Dowel (Cursed item)
- VIAL OF RYAN REYNOLDS' BLOOD
- ORBER'S CODEX (1ST EDITION)
- A CRUDE SKETCH OF A PILE OF GARBAGE
- 20x Ender Ribbons
- 10x Annie's Fried Ration (Ranch Flavor)
- Pixie in a JAR
- 2x Shea Butter
- Enchanted FAN (magic word = "Please")

Languages - Geckian, common

QUESTS

- A local lord named TyloRius Jonephius has offered 300 gold orbs to rescue his wife from the Arch-Fey Jorm's Forbidden Forest fortress

SPELLS

- Gorgon's Glum Spray
- Fireball
- POWER PUMP
- Phazer's Healing BLAST
- Kongu's Crushing FIST
- Tayne's Latest DANCE

10 the forest fortress - Take the last road from Maldu's Gate and head south along DAN'S Ravine



The background of the advertisement is a photograph of a futuristic laboratory. In the center, there is a large, transparent glass dome structure. To the left, there is a complex piece of scientific equipment with many wires and components. The room has large windows in the background, and the overall lighting is a mix of blue and purple, giving it a high-tech, mysterious feel.

Are you plagued  
by nightmarish  
visions?

*The*  
***Spookman Institute***  
*can help ♡*

Become a Research Participant  
in The Revolutionary Halloween-GPT  
Thought Experiments Today