

# Skeleton Realm

April '24



# Pop-Corn? I'm Torn!

Snack Attack System!

Pick One!

Pop-Corn  
Chips  
Candies  
Other Snacks

Well, its time to get going... Its time to start the show... Let's get a Pop-Corn thing going...When we get together and enjoy each other's company, sometimes we want popcorn, but also sometimes we want other snacks! Pull up this poemprose when you can't decide!

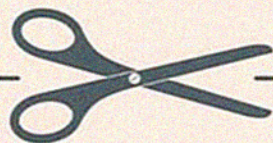
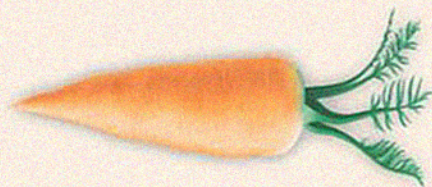


## SNACK PRANK!!!

**TIP:** Cut what is below "out" and prank your friend or friends. Give them the healthy snack side if what they want is a dirty snack. You can give them the dirty side snack if they want a healthy style one. Cut it down the middle or also you can fold it in half once you cut it, so one side is healthy and one side is dirty.

Write your choice here!

-----  
-----



# WE *Were* BEE KINGS.



## And We Still Are...

If one thing has been certain since Bee's came on the scene, its that the Bee Kings have been there. Boasting 800lbs of honeygut between them, they stand 10 feet tall combined, head to toe.

Lover of a Bee King's stats? Then I bet you just really enjoyed the first few sentences I wrote. Lover of a Bee King's Smell, well listen up! The Bee Kings smell like fresh honey, probably because they are around bees nonstop and 24/7 aswell. I sat down with the Kings to talk about what it means to be a Bee King in spring 2024.

**Doug**

Hey Kings! Welcome to the studio and welcome to the show!

**Bee King Jason**

Thanks!

**Doug**

So I wanted to ask, do you pump bee honey or just collect it? How do you harvest this spring and other times too?

**Bee King Jason**

We pump sometimes yeah, we also collect with little buckets.

**Bee King Michael**

(Laughing) I just pumped a Bee.

**Bee King Jason**

(Laughing) Oh my gosh...

**Doug**

Thank you guys so much for being here.



“I just pumped  
a Bee.”



# REALM EYE

REALMEYE.ME

A Way For You To Look\*



\* You're only allowed to look for Morph.



The following content was submitted by Skeleton Realm Contributors known as "Realms" and the businesses/organizations they represent. The opinions expressed within said content are solely the author's and do not reflect the opinions and beliefs of Skeleton Realm LLC or MeMoreTV.

# "THE BEST GRUNTH YOU'LL EVER TRY"



**SHITSTON'S**

"WHERE THE MEMORIES FLOW"



ASK ABOUT  
OUR STRUNKBOX  
FOR KIDS  
AND TWEENS

**NOW  
ONLY  
\$5**

**GRUNTH BURGER**

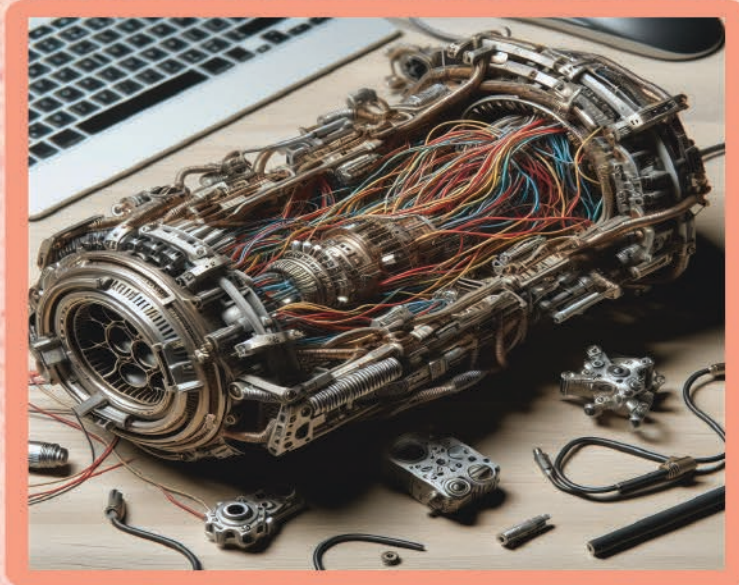
**ASSFRIES**

**BIG CHUGGER**

**SAVOR THE TASTE OF SHITSTON'S REAL SHIT FLAVOR IN THE NEW SHITBOX COMBO MEAL. CHOW DOWN ON THE TASTE OF SHIT YOU KNOW AND LOVE, AND BREATHE IN THE AROMAS OF A CLASSIC SHITSTON'S BITE. YOUR TASTEBUDS WILL WATERAT OUR NEW GRUNTH TEXTURES AND YOU'LL LOVE A SIDE OF ASSFRIES TO TOP IT ALL OFF. GET DIRTY TODAY AT YOUR LOCAL SHITSTON'S AND LET THE MEMORIES FLOW!**

# OKAY.

## Who Took the Top Panel Off of My Device?



I returned to the office on Thursday morning to discover that someone had removed the top panel of my Device, it is nowhere to be found. Why? I do not know, but I need it back **NOW!**



The Device in Question...

The Device does not work without the top panel. It is important that we keep this Device in working condition.

If you are responsible for the removal of this top panel, or know who is, please come see me **IMMEDIATELY.**

**THERE WILL BE REPERCUSSIONS.**



*Jason's*  
*by Michael*



JASON'S

## TIRED OF RIPPING YOUR HAIR OUT?

**No?  
Oh, OK.**

**But if you were to become tired of hardcore hair ripping:**



VISIT US ONLINE AT [POOLNOODLE.COM](http://POOLNOODLE.COM)  
OR IN PERSON IN S. DENNIS, MA  
AND GARRETT, WY  
TO SPEAK WITH A "PROFRESHIONAL" TODAY!



**Lighthouse Home  
for the Elderly**

- \*24/7 care
- \*live inside lighthouse
- \*cheese and bread
- \*fun activities
- \*SRL viewings each Wed.
- \*medical assistance
- \*lighthouse operating

## SEEKING SANCTUARY: ZOOKEEPERS AND SEA WORLD STAFF UNITE

**THAT'S RIGHT! SEA WORLD STAFF AND ZOOKEEPERS ARE UNITING TO FORM ONE GREATER CAUSE, FINDING A TRUE PLACE TO CALL HOME.**

**EVER SINCE SEA WORLD AND LOCAL ZOOS HAVE SIMULTANEOUSLY SHUT DOWN AS MANDATED BY THE MOVEMENT FOR THE OPTIMAL OPERATION OF SOCIETY ENTREATY (M.O.O.S.E), EMPLOYEES OF THESE FINE ESTABLISHMENTS HAVE BEEN**

**IN A DESPERATE SEARCH FOR NEW CAREERS.**

**DROVES OF UNEMPLOYED LABORERS ARE FLOODING THE STREETS, AND CAMPS FULL OF TENTS NOW FILL EVERY PARKING LOT.**

**WITHOUT ANY KNOWLEDGE OR EXPERIENCE OUTSIDE ANIMAL ENCLOSURE TENDING, THESE ZOOKEEPERS AND SEA WORLD STAFF HAVE NOWHERE LEFT TO TURN.**

**(ALSO NOWHERE TO PARK)**

**GOVERNMENT AGENCIES HAVE ALSO BEEN DISPATCHED TO EXTERMINATE THESE ESSENTIAL WORKERS; A DOUBLE WHAMMY BROUGHT UPON THEM BY THE M.O.O.S.E. STATING THAT "PARKING SPACES MUST NOT BE OCCUPIED BY NON-VEHICULAR OBJECTS IN ORDER TO PROTECT AMERICANS' RIGHT TO PARKING WITHIN A REASONABLE DISTANCE."**



**DANNY B: REALMER, ZOOKEEPER RIGHTS ACTIVIST**

# GORBFEST 2024

By Gandalf the Black

It's gonna go DOWN - Get your tickets NOW - 31st-34th Sept '24



# CALCULUS CONE MEN



Math, madness, and a little bit of fun! Join the Cone Men as they learn to differentiate not only mathematical functions, but also between friend and foe. Starring Jared Knumknutts as Martin Coneston, and Horrend Glog as the wicked Professor Speedrrz we love to hate and hate to love. Coming this summer! Tuesday Nights at 9/8c - Only on [MeMore TV](#)

**YOU ARE HAPPY!**

**Don't worry! This will never end!**



Keep going. You have to keep working.  
It feels good to have a purpose.  
Productivity is meaningful.  
Everyone works til they die!

BORING PEOPLE! READ!

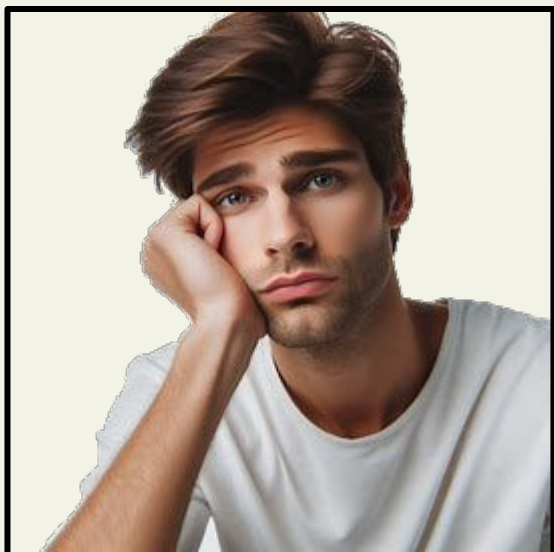
THIS IS AN AD FOR...

# DRAGORB!<sup>TM</sup>

---

With our new patented Sorp Jobblins formula, the newest DRAGORB!<sup>TM</sup> has been released, with **CRAZY RESULTS!**

Never be bored again! Have your life permanently altered with no chance to return it to normal!



Now available for sale at Slon Kesher's<sup>TM</sup> Grocery for a price of between

**\$3.99 to \$7.03 x 10<sup>7</sup>**

---

By purchasing and using Dragorb, you acknowledge and accept the irreversible nature of the transformation it induces, turning you into a dragon indefinitely. You understand that this transformation may lead to significant life alterations, including social, professional, and familial repercussions, as well as potential legal and social consequences. Additionally, users may be susceptible to Cosmic Illness, a condition with unpredictable symptoms and effects. Dragorb<sup>TM</sup> Inc and its affiliates disclaim all liability for any damages, losses, or injuries incurred as a result of Dragorb's use, and you agree to hold them harmless from any claims or actions arising from its usage. Before using Dragorb, it is advised to seek consultation with qualified professionals and to fully understand and accept the risks involved. By proceeding with the purchase and use of Dragorb, you acknowledge your responsibility for any consequences resulting from its usage.